

BAIXA POMBALINA A PATRIMÓNIO MUNDIAL: AINDA É POSSÍVEL?

Dia Internacional dos Monumentos e Sítios

Antiga Igreja de São Julião - Sede do Banco de Portugal

21 ABRIL 2015

CONFERÊNCIA

pedro pacheco



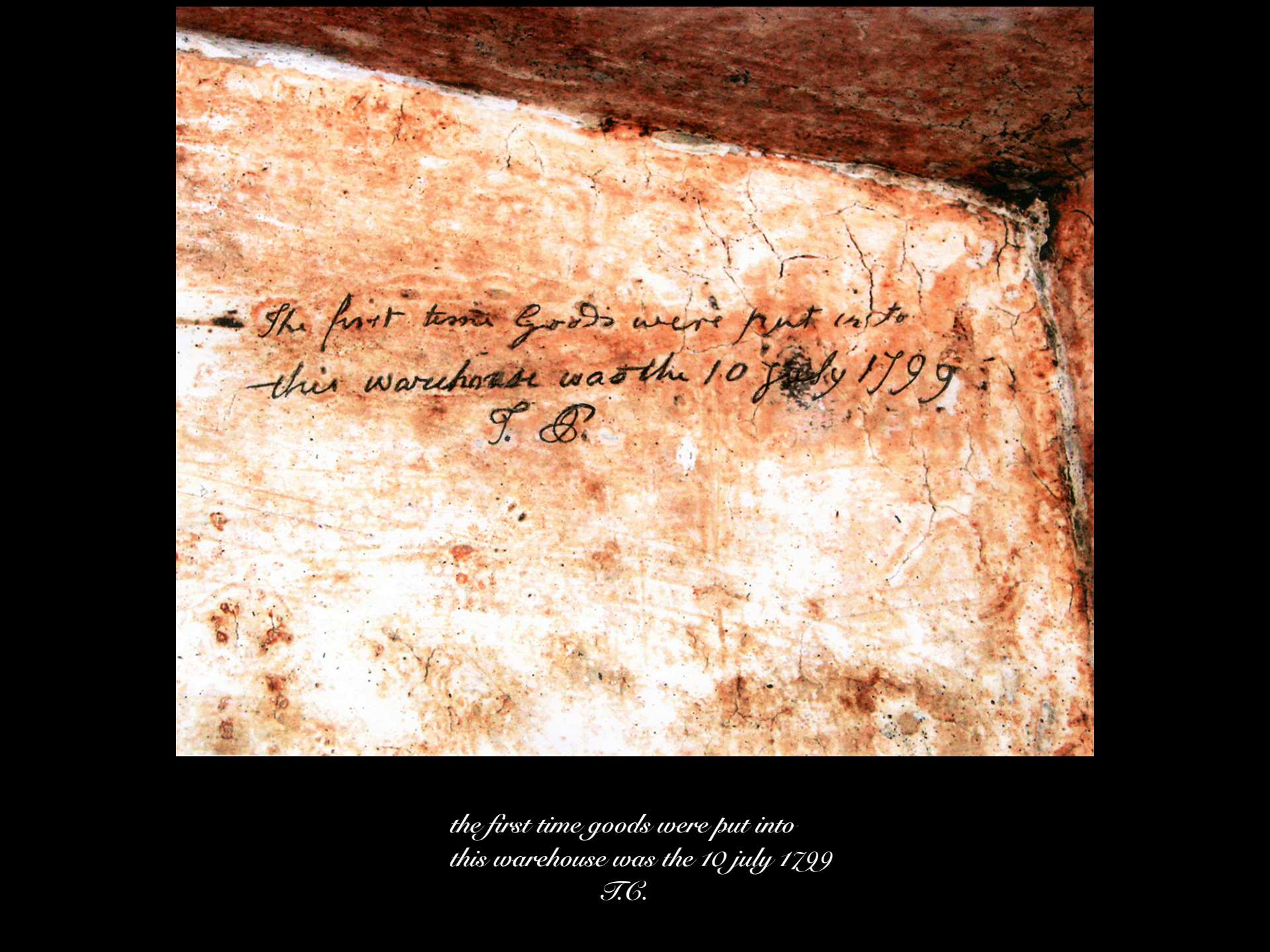




ATELIER DE ARQUITECTURA, LISBOA (2012-2014)
CALÇADA DO CORREIO VELHO

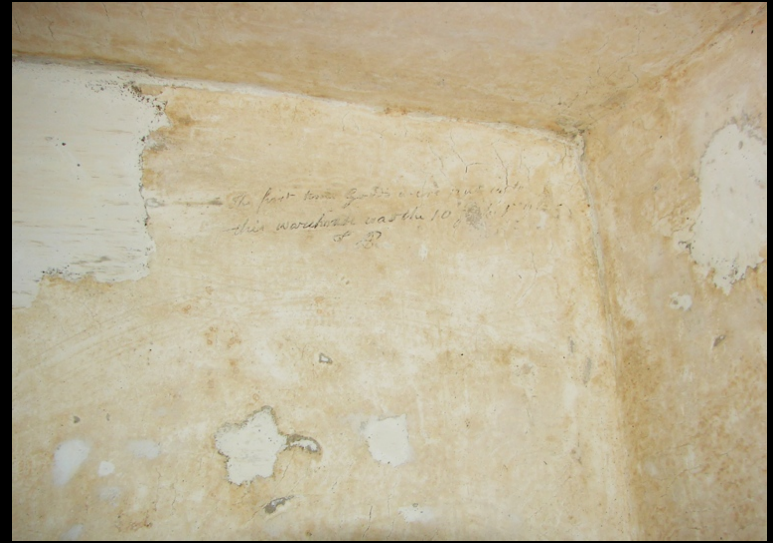
The image shows the interior of a large, vaulted stone structure, likely a warehouse. The architecture features a series of repeating arches supported by a central square pillar. The stone is a light, weathered tan color. The lighting is soft, highlighting the texture of the masonry. In the lower right, a dark, arched opening is visible, possibly a doorway or a niche. The overall atmosphere is one of historical grandeur and architectural scale.

"The first time goods were put into this warehouse was the 10 July 1799"
T. C.



The first time Goods were put into
this warehouse was the 10 July 1799
T. B.

*the first time goods were put into
this warehouse was the 10 July 1799
T.B.*





Ficardo Jacinto (Violoncelo+loop sampler) **10 Julho 2013** calçada do correio velho, 10-14 Lisboa. www.pacheco.net







SIMÃO COSTA
PIANO PRE-CAUTION PER-CUSSION ON SHORT CIRCUIT
(piano, transducers, speakers and objects)
10 Julho 2014
calçada do correio velho, 10-14 Lisboa www.ppacheco.net



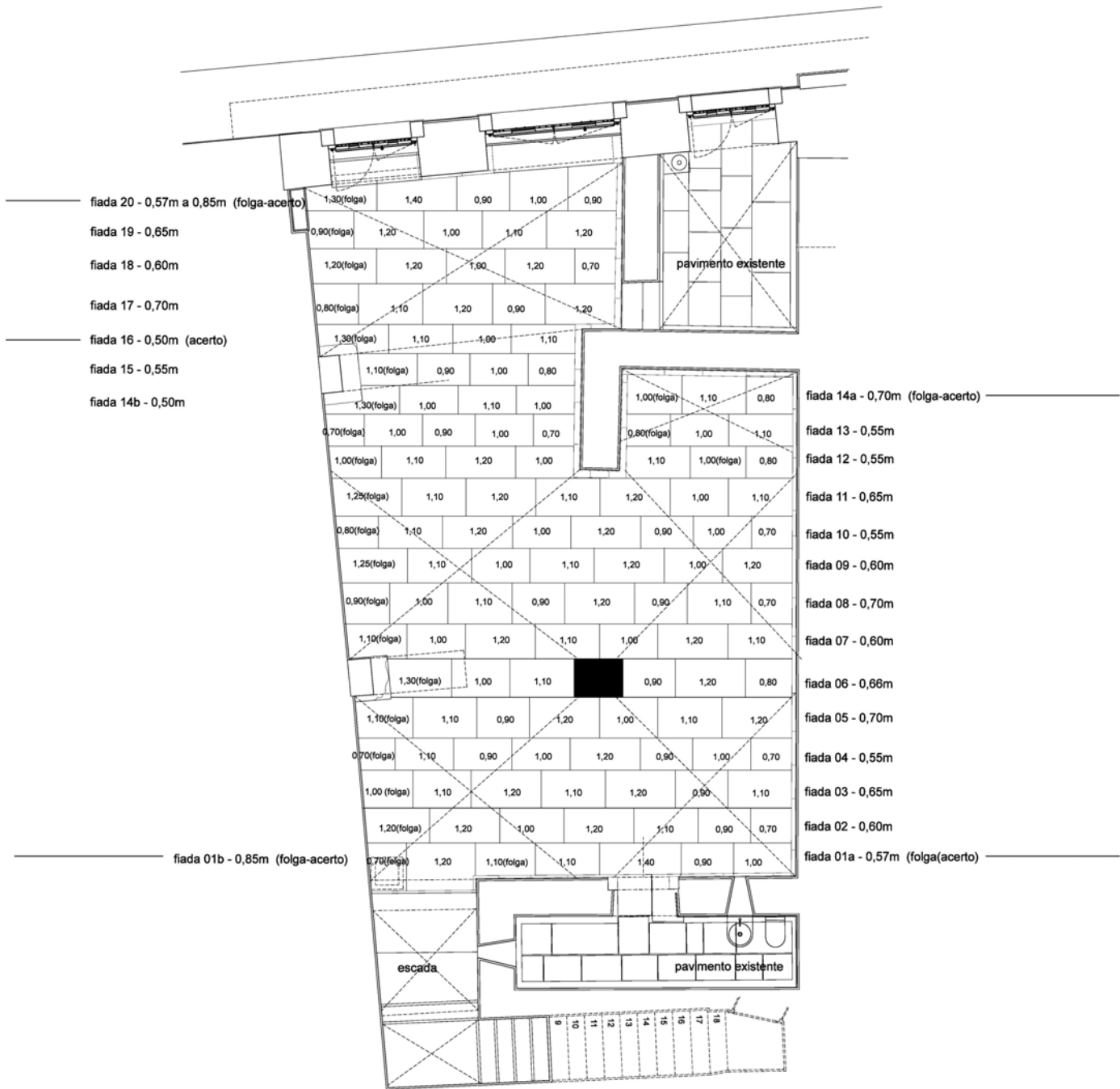




















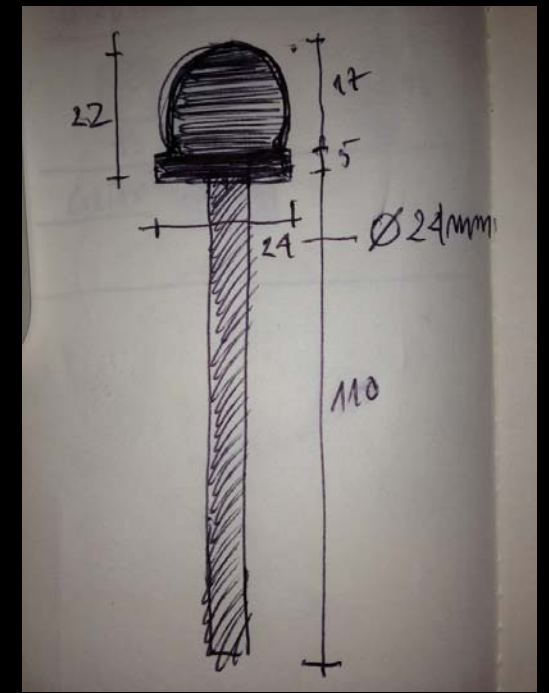




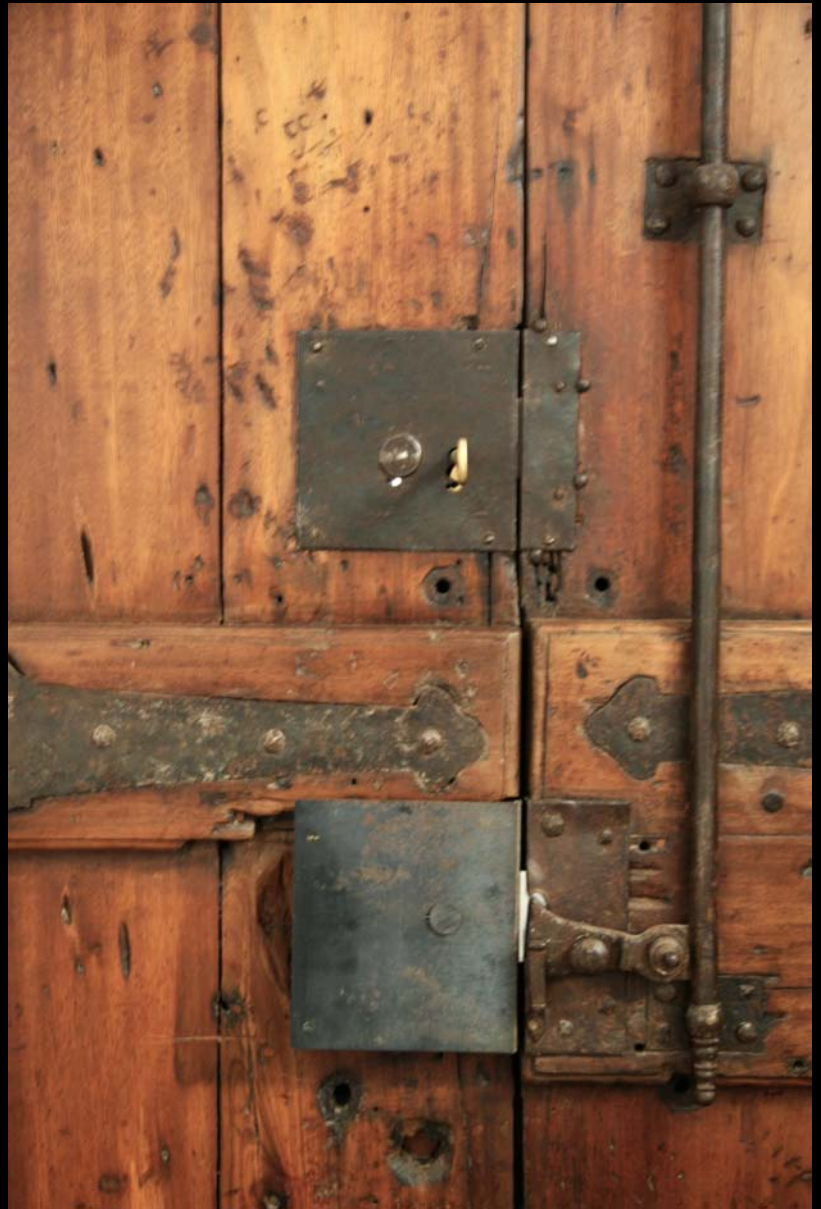
12

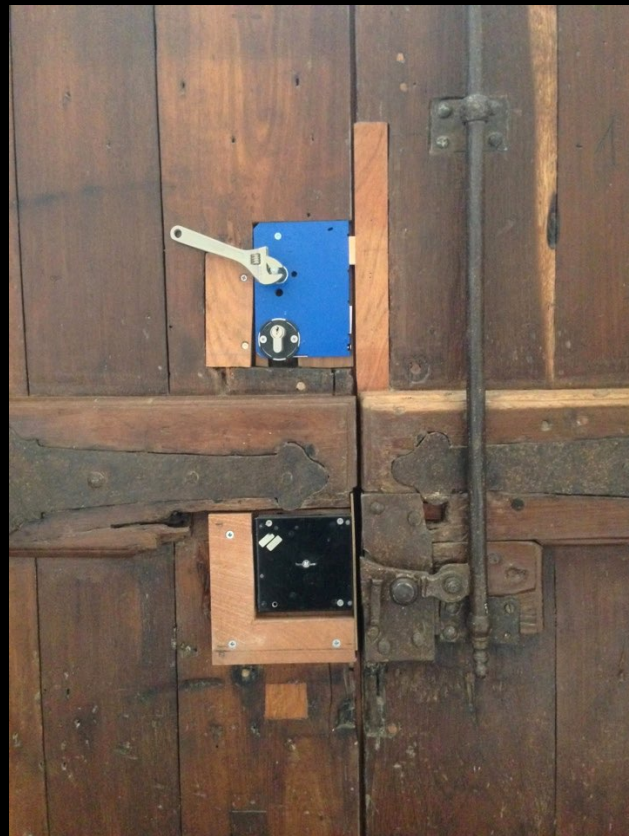


















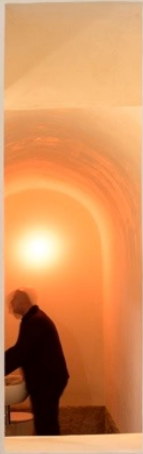






























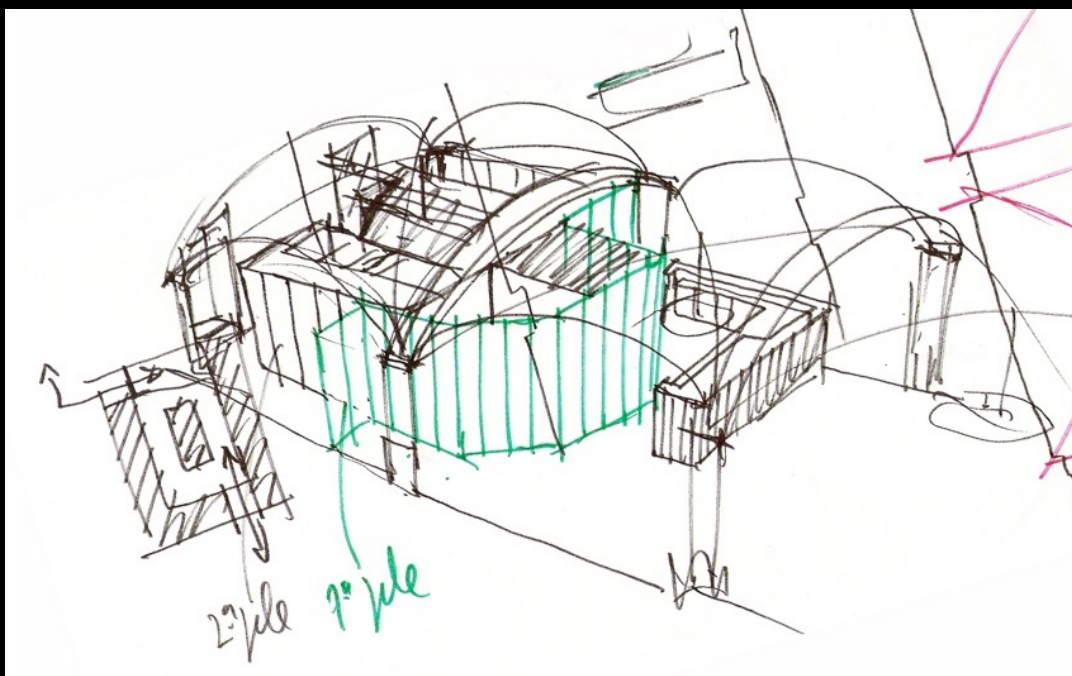
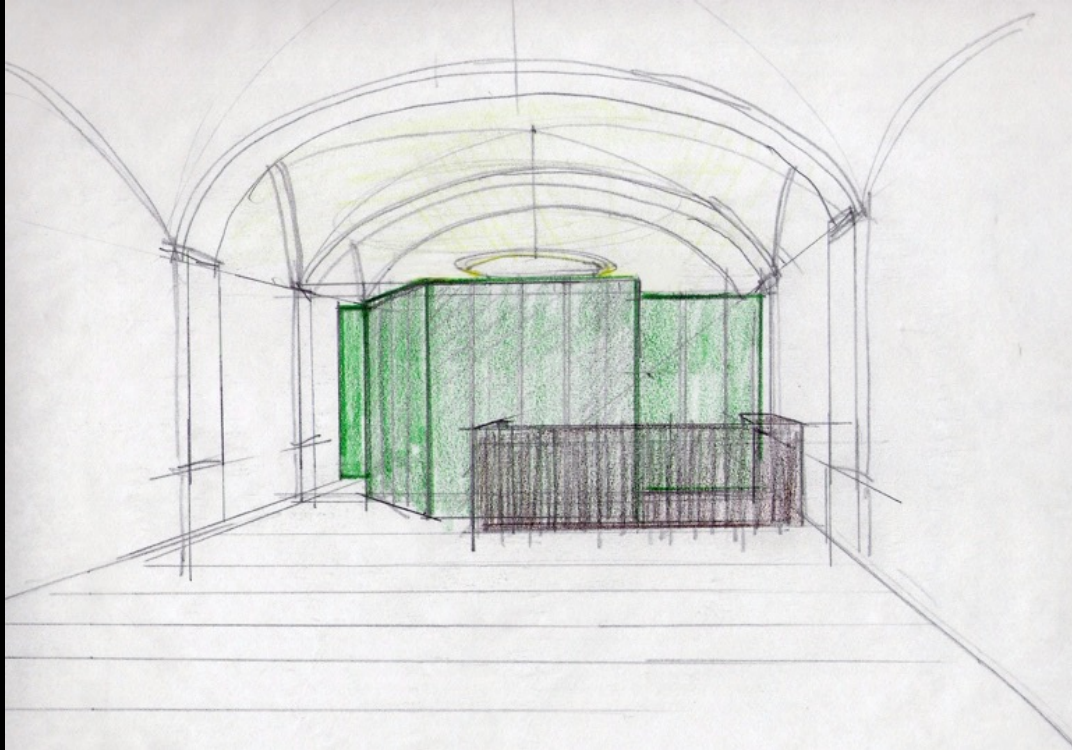


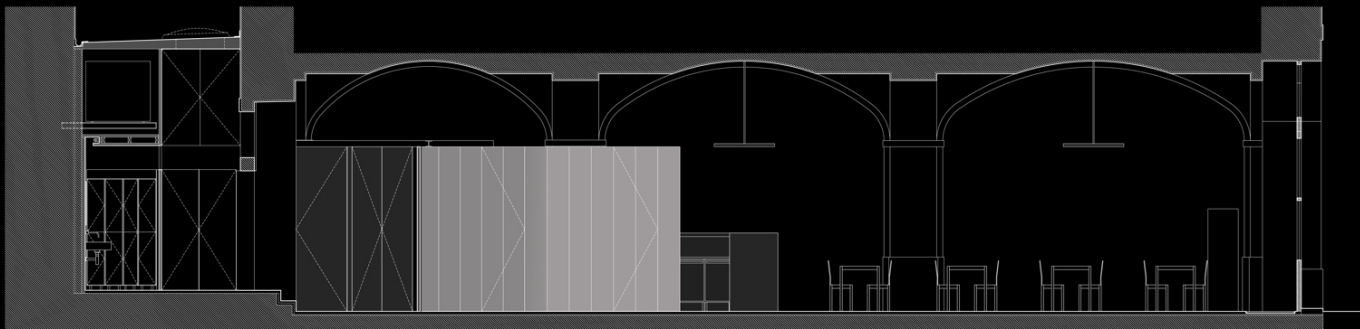
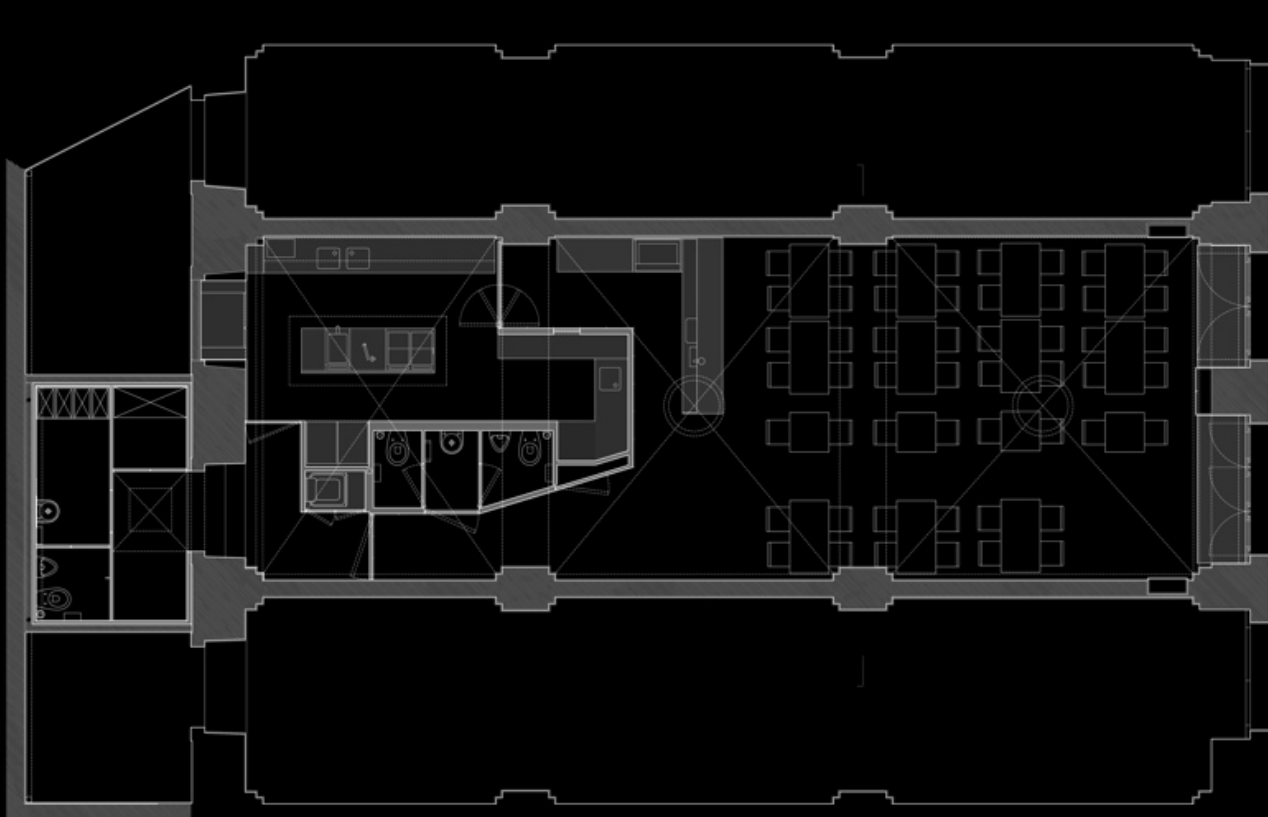




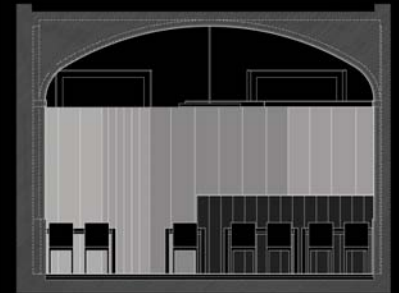
RESTAURANTE SANTA RITA, LISBOA (2006-2010)
RUA DE SÃO MAMEDE







0 0.5 1 2m



0 0.5 1 2m



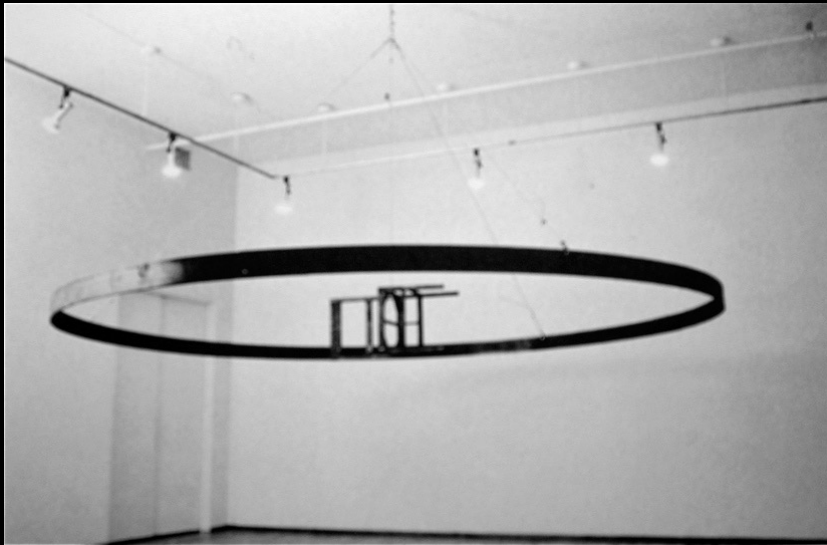
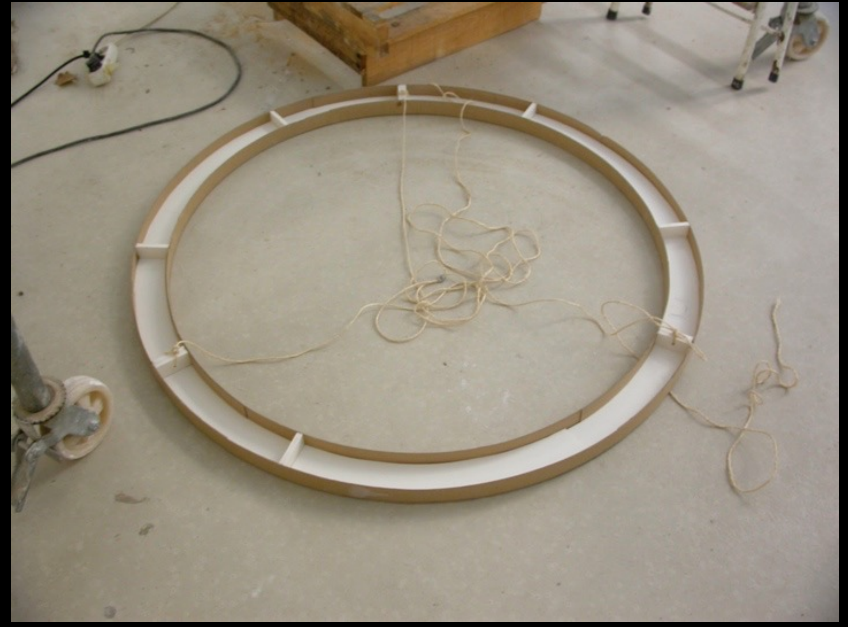












Bruce Nauman, "South America Circle" 1981 (steel, cast iron, and wire)





















APARTAMENTO, LISBOA (2009-2011)
RUA DAS PEDRAS NEGRAS



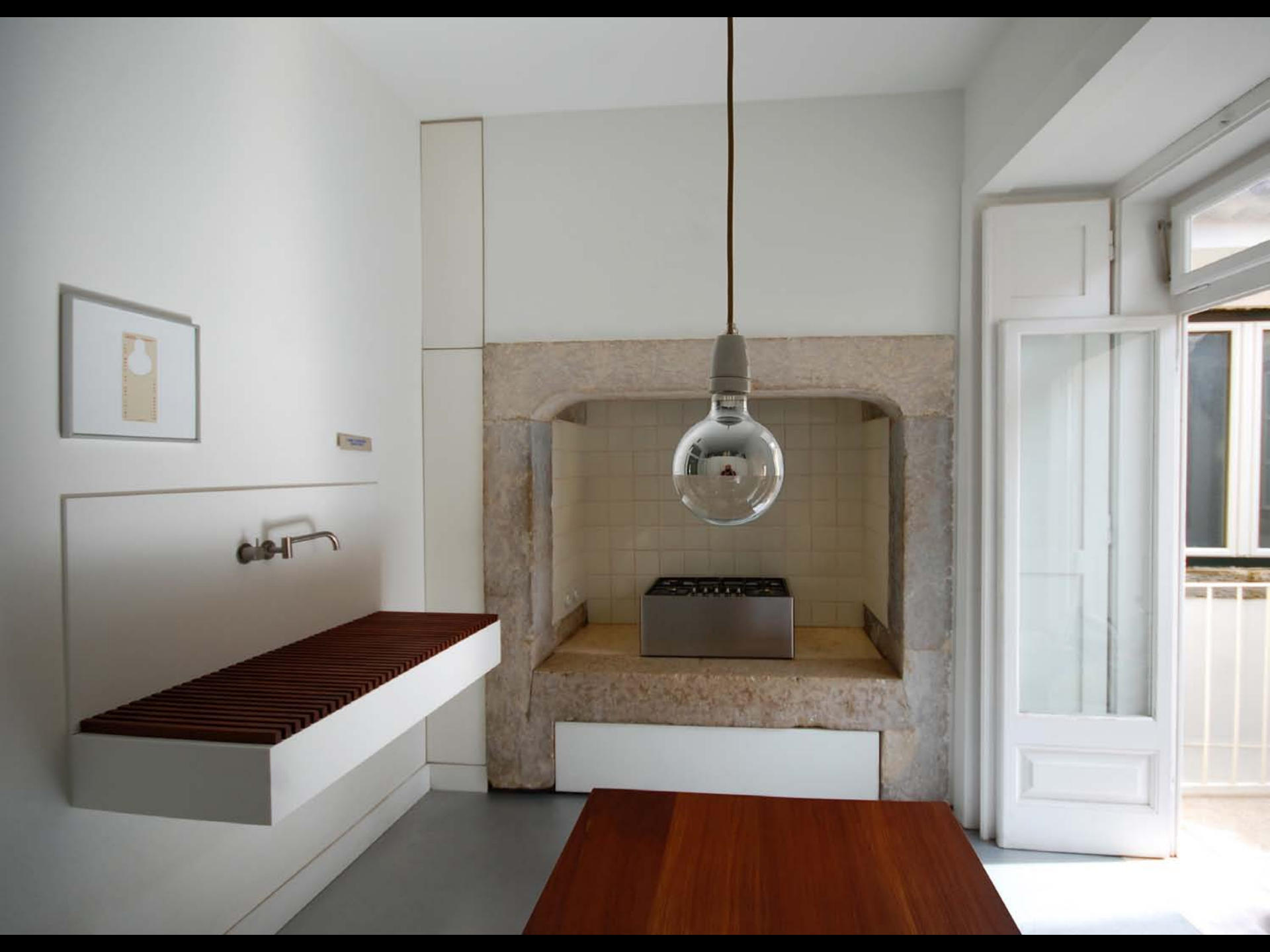




- 1 - Hall
- 2 - Cozinha
- 3 - Varanda
- 4 - Corredor
- 5 - Quarto
- 6 - Sala
- 7 - Arrumo
- 8 - Inst. sanitária

...















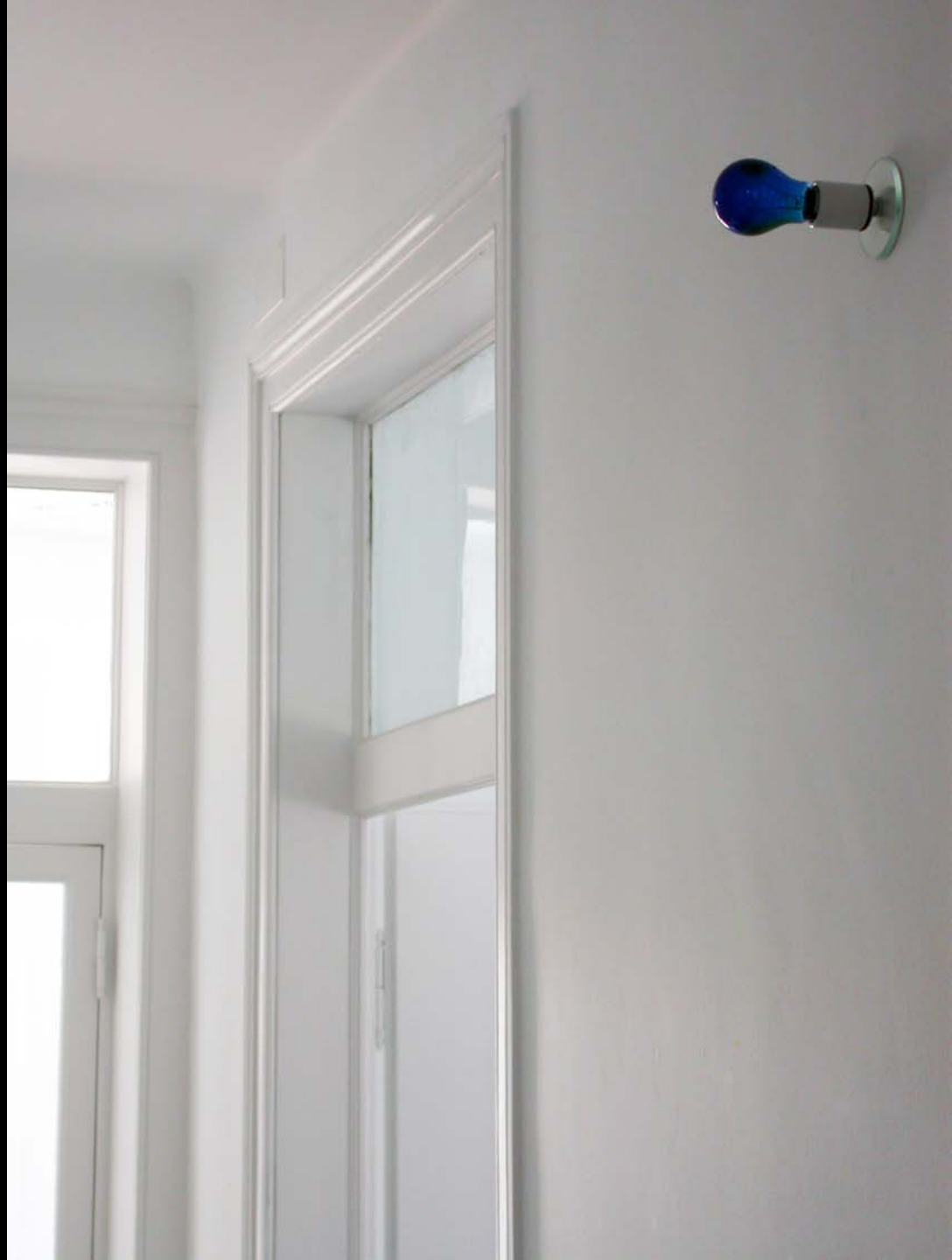






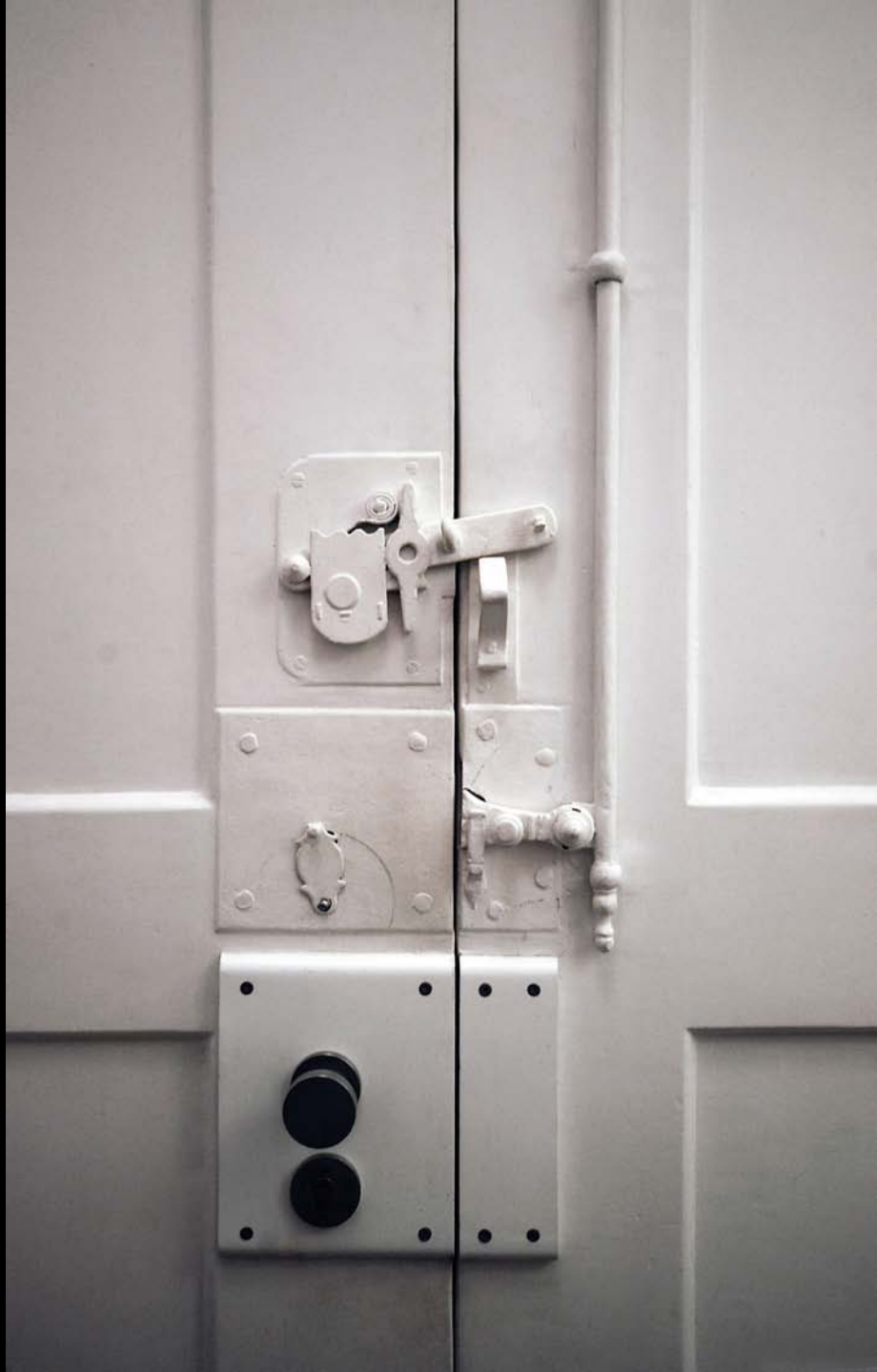




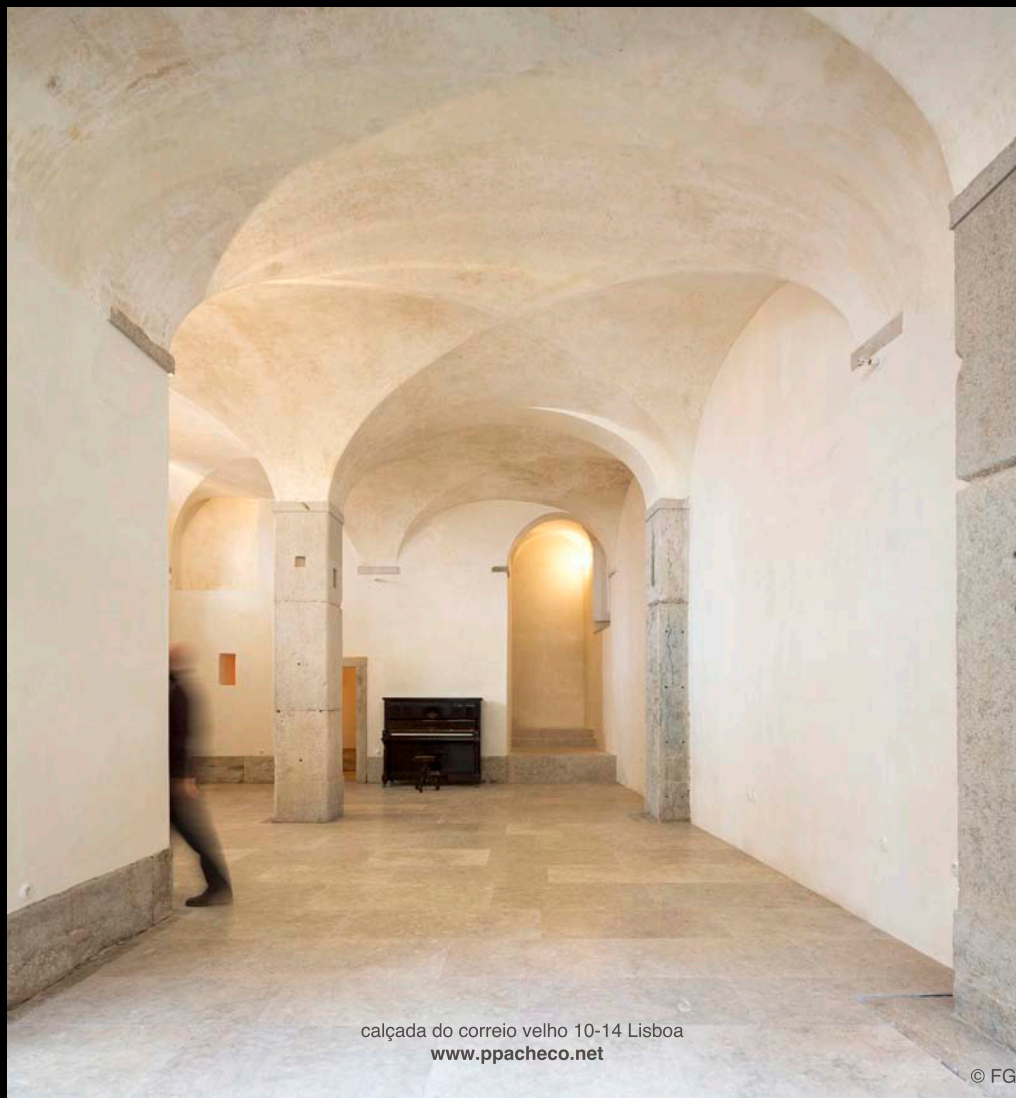












calçada do correio velho 10-14 Lisboa
www.ppacheco.net

BAIXA POMBALINA A PATRIMÓNIO MUNDIAL: AINDA É POSSÍVEL?

Dia Internacional dos Monumentos e Sítios

Antiga Igreja de São Julião - Sede do Banco de Portugal

21 ABRIL 2015

CONFERÊNCIA

PEDRO PACHECO

pedro pacheco arquitectos
Calçada do Correio Velho, 10
1100-171 Lisboa

ppacheco@ppacheco.net

Atelier de Arquitectura

Calçada do Correio Velho

(2012-2014)

Fotografia: Fernando Guerra, Pedro Pacheco

Colaboração: Filipe Faustino, Dani Henriques

Restaurante Santa Rita

Rua de São Mamede

(2006-2010)

Fotografia: Fernando Guerra, Pedro Pacheco

Colaboração: Leonor Pereira, Nuno Mesquita, Joana Oliveira

Apartamento

Rua das Pedras Negras

(2009-2010)

Fotografia: Pedro Pacheco

Colaboração: Leonor Pereira, Joana Oliveira